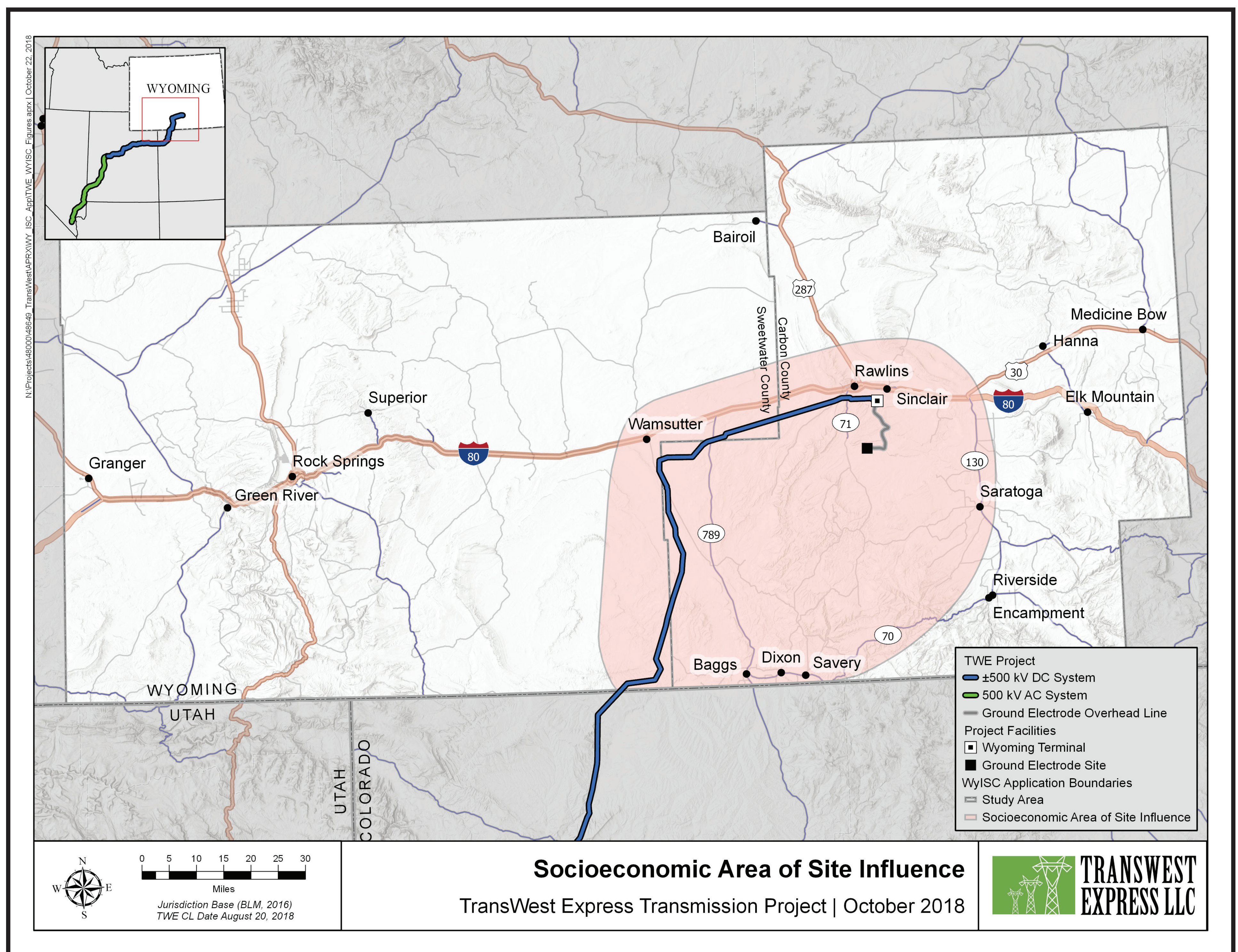


Study Area and Socioeconomic Area of Site Influence

- The Wyoming Industrial Siting Division has determined that the TWE Project requires a permit from the Industrial Siting Council.
- The TWE Project Study Area is Carbon County and Sweetwater County.
- Project impacts to social, economic and environmental resources have been analyzed in the Area of Site Influence.



- The Area of Site Influence for the socioeconomic analysis includes those communities within the Study Area that may be affected socially or economically, in any significant degree, by the TWE Project. To determine which communities to include in the Area of Site Influence, TransWest's expert socioeconomic consultants applied three criteria.
 1. Whether the commuting distance from the community to a TWE Project work site is 60 miles or less, and whether the commuting time is within 1 hour.
 2. The availability of temporary accommodations.
 3. The availability of services and retail opportunities.
- The communities in the socioeconomic Area of Site Influence include the following:
 - ♦ Carbon County, as well as its municipalities of Baggs, Dixon, Rawlins, Sinclair and Saratoga.
 - ♦ Sweetwater County, as well as its municipality of Wamsutter.